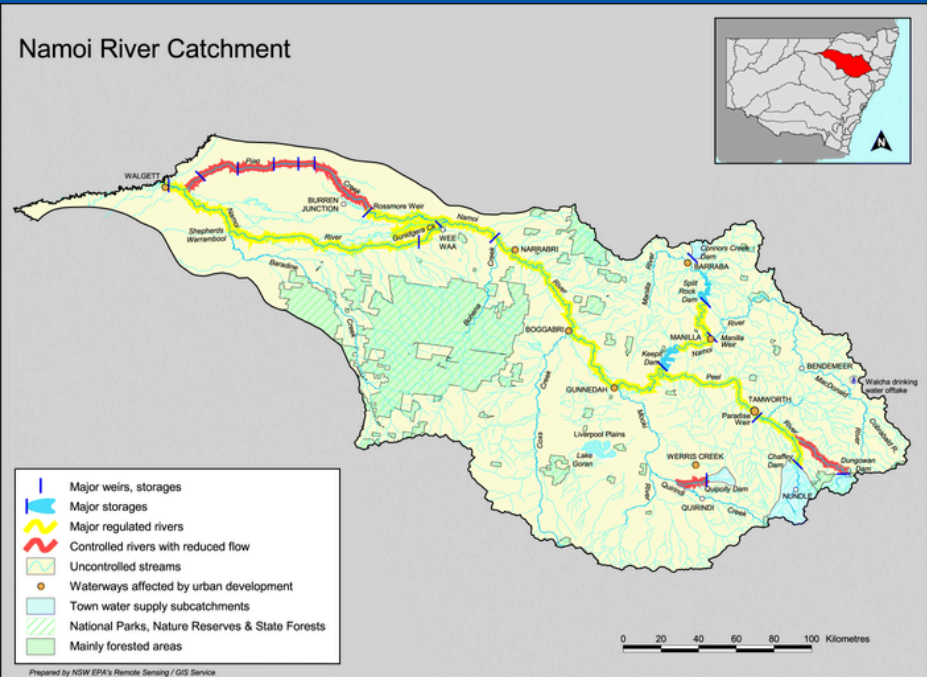


Water in

NAMOI VALLEY



Where:	Northern NSW
Towns:	Tamworth Gunnedah Narrabri Walgett
Basin:	Murray-Darling
Catchment area:	4% of Murray-Darling Basin
Contribution to Basin:	3.2% of Murray-Darling Basin

Kamilaroi/Gomeroi Country

These waterways hold deep cultural significance for the [Kamilaroi](#) people, the traditional custodians of the land.

The Kamilaroi people are the [largest water holder in the Murray-Darling Basin](#). They have the largest volume of water moving across, through and under their Country. This includes the Great Artesian Basin, eleven rivers, and Gingham water hole at their wetland.

[Fire & Seasons Calendars](#)

[The Science of Snags : Modern Science & Elders Collaborate on Peel River Health](#)

Namoi River's

Distributaries

flow away (takes) from Namoi River

- Gunidgera Creek
- Narrabri Creek
- Pian Creek

[The Namoi & its Tributaries](#)

Tributaries

flow towards (adds to) Namoi River

- Cockburn River
- MacDonald River
- Manilla River
- Peel River
- Baradine Creek
- Bohena Creek
- Cox's Creek

Namoi Catchment

Boundaries

- West - Great Dividing Range
- North - Nandewar Ranges and Mount Kaputar
- South - Liverpool and Warrumbungle Ranges

Key Ecosystems

- [Pilliga Forest](#) - largest dry sclerophyll forest west of the Great Dividing Range in NSW that is important habitat for plants and animals
- [Lake Goran](#) - nationally significant wetland providing important habitat for waterbirds

Economy

- Agriculture - stock (eg. [cattle](#) & sheep) grain & cereals (eg. [wheat](#)), oilseed, legumes, lucerne (for hay) & [cotton](#)
- Industry - forestry, mining (coal & coal seam gas)

Other

People use a significant amount of groundwater from high-yield aquifers and the [Great Artesian Basin](#).

[Sustainable Rivers Audit](#)

[Namoi Water Plan](#)

[Biodiversity in Namoi](#)

Keepit Dam

Completed 1960

Closest Town:

Gunndah

River:

Namoi

Dam Size:

55 m x 530 m

Capacity:

419 GL

Reservoir:

44 km²

Chaffey Dam

Completed 1979

Closest Town:

Nundle

River:

Peel

Dam Size:

62 m x 500 m

Capacity:

101 GL

Reservoir:

7.2 km²

Split Rock Dam

Completed 1987

Closest Town:

Manilla

River:

Manilla

Dam Size:

68 m x 456 m

Capacity:

394 GL

Reservoir:

32 km²

Water Users

Local water users can join [WaterNSW's Customer Advisory Groups \(CAGs\)](#) and meet regularly to raise issues, provide advice, and share information.

The federal and state governments hold water licenses and plan how they use water for the environment.

Irrigators

Livestock

Industry

Mining

Households

Towns

Recreation

Cultural

Environment

Managing Water

Water is a precious resource that is protected by laws and carefully managed by three main agencies in NSW.

Dept of Climate Change, Energy, the Environment & Water (DCCEW)

Makes the rules

Plan and develop laws, policies, and guidelines for everyone to follow

Implements the rules

- Manage NSW's river systems & 41 dams
- Organise most users' licensing & approvals
- Monitor water for other agencies

Natural Resources Access Regulator (NRAR)

Enforces the rules

Oversee and investigate to make sure everyone is following the rules

Native Species

Silver Perch

Murray Cod

Platypus

Bell's Turtle

Booroolong Frog

Barking Owl

The Namoi Valley is home to many native species, including threatened plants and animals. [DPIF](#) manages threatened fish. Our [Mollee Weir](#) on Namoi River has a fish lock to improve fish passage.

Local River Projects

[Peel River Fish Habitat Restoration](#): Collaboration of OzFish Unlimited and Landcare NSW

[Namoi Demonstration Reach](#): Empowering the local community to improve the health of the Namoi River between Gunndah and Narrabri

[Conserving the Bell's Turtle in Macdonald River & Collaboration of local farmers, University of New England, Local Land Services, ecologists, and dogs!](#)