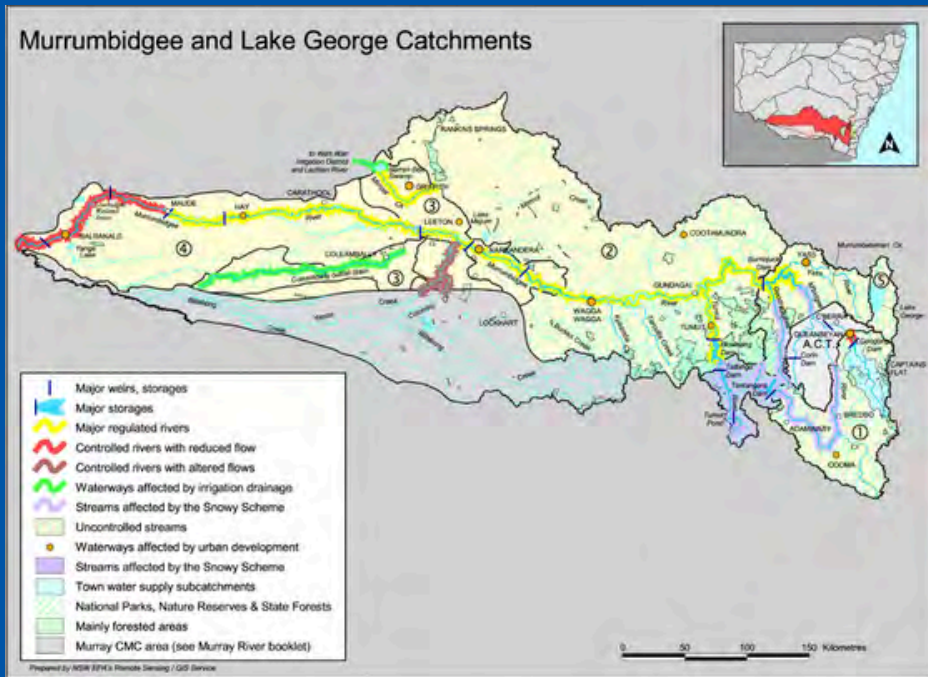


# Water in MURRUMBIDGEE VALLEY



### Fast Facts

Where: Southern NSW

Towns: [Canberra](#)  
[Wagga Wagga](#)  
[Griffith](#)  
[Queanbeyan](#)

Basin: [Murray-Darling](#)

Catchment area: 8% of Murray-Darling Basin

Contribution to Basin: 16% of Murray-Darling Basin

### Wiradjuri Country

The [Wiradjuri](#) (Three River) people are the largest Aboriginal nation in the Murrumbidgee catchment. Marrambidya Bila (Murrumbidgee River) is an extremely important lifeline to the Wiradjuri people. First Nations peoples in this catchment help plan cultural water flows to care for significant ecosystems.

[Marrambidya Bila: The importance of Murrumbidgee River for Wiradjuri](#)

[Cultural water on Wiradjuri Country](#)

### Murrumbidgee Catchment

**Boundaries**

- East - Great Dividing Range
- West - River Murray floodplain
- North - Lachlan catchment
- South - Murray catchment

**Key Ecosystems**

- [Lowbidgee Floodplain](#) - Largest remaining wetland in Murrumbidgee Valley and includes the [Gayina wetland](#) of the Nari Nari people with its rare and endangered frogs and birds and threatened plants
- [Fivebough and Tuckerbill Swamps](#) - Both swamps provide a breeding habitat for 22 identified species of waterbirds

**Economy**

- People Agriculture - [Irrigated](#) farming in the lower catchment produces [rice](#), fruit (eg. [grapes](#)), vegetables, while [dryland](#) farming and [grazing](#) dominate the middle and upper catchment
- Industry - Meat and fruit processing, grain milling and wine production

**Other**

- People rely on releases from Burrinjuck and Blowering dams for irrigation, town supply, and environmental flows.

[Sustainable Rivers Audit](#) [Murrumbidgee Water Plan](#) [Health of Murrumbidgee](#)

### Murrumbidgee River's

**Distributaries flow away (takes) from Murrumbidgee River**

- Yanco Creek
- Colombo Creek
- Forest Creek
- Billabong Creek
- Bundiggerry Creek

**Tributaries flow towards (adds to) Murrumbidgee River**

- Tumut River
- Molonglo River
- Cotter River
- Goodradigbee River
- Queanbeyan River
- Yass River
- Gudgenby River

### Blowering Dam Completed 1968

Closest Town: Tumut  
River: Tumut  
Dam Size: 114 m x 747 m  
Capacity: 1,604 GL  
Reservoir: 45 km<sup>2</sup>

### Burrinjuck Dam Completed 1928

Closest Town: Yass  
River: Murrumbidgee  
Dam Size: 93 m x 233 m  
Capacity: 1,025 GL  
Reservoir: 55 km<sup>2</sup>

### DID YOU KNOW? [Hydroelectricity in Murrumbidgee](#)

Hydroelectric dams in the Murrumbidgee catchment generate enough electricity for up to 750,000 homes per year as part of the [Snowy Mountains Scheme](#).

### Water Users

Local water users can join WaterNSW's [Customer Advisory Groups \(CAGs\)](#) and meet regularly to raise issues, provide advice, and share information.

The federal and state governments hold water licenses and plan how they use water for the environment.

Irrigators Livestock Industry Forestry Households Towns Recreation Cultural Environment

### Managing Water

Water is a precious resource that is protected by laws and carefully managed by three main agencies in NSW.

**Dept of Climate Change, Energy, the Environment & Water (DCCEEW)** **Makes the rules**

Plan and develop laws, policies, and guidelines for everyone to follow

**WaterNSW** **Implements the rules**

- Manage NSW's river systems & 41 dams
- Organise most users' licensing & approvals
- Monitor water for other agencies

**Natural Resources Access Regulator (NRAR)** **Enforces the rules**

Oversee and investigate to make sure everyone is following the rules

### Native Species

The Murrumbidgee Valley is home to many native species, including threatened plants and [animals](#). [DPIF](#) manages threatened fish.

[Silver Perch](#) [Murray Crayfish](#)  
[Platypus](#) [Murray River Turtle](#) [Southern Bell Frog](#) [White-bellied Sea Eagle](#)

### Local River Projects

[Revegetation Project in the Riverina](#): A carbon revegetation project to repair erosion, increase productivity and improve water quality flowing into the Murrumbidgee river.

[Reconnecting River Country - Murrumbidgee](#): Aims for higher environmental flows, infrastructure upgrades

[Modernising The Irrigation Network in Murrumbidgee](#): A decade long project aiming to save water by implementing more efficient irrigation methods.