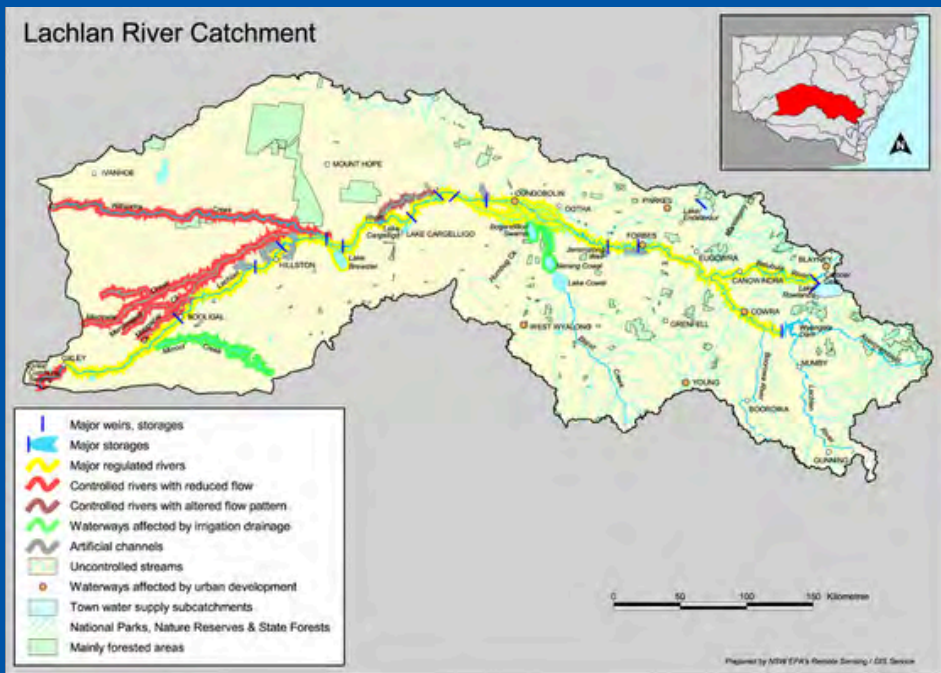


Water in LACHLAN VALLEY



Fast Facts	
Where:	Southern NSW
Towns:	Boorowa Cowra Canowindra Forbes
Basin:	Murray-Darling
Catchment area:	8% of Murray-Darling Basin
Contribution to Basin:	6.5% of Murray-Darling Basin

Wiradjuri Country

The Wiradjuri (Three River) people are the largest Aboriginal nation in the Lachlan catchment. [Galarri](#) (Lachlan River) is an extremely important lifeline to the Wiradjuri people. First Nations peoples in this catchment help plan cultural water flows to care for significant ecosystems.

- [Wiradjuri Dictionary](#) - Learn about the Wiradjuri language.
- [Connection to Kalari Bila](#) - Project aimed at gathering insight into indigenous cultural practices along the Lachlan River

Lachlan Catchment

Boundaries

- East - Great Dividing Range
- West - Great Cumbung Swamp
- North - Darling catchment
- South - Murrumbidgee catchment

Key Ecosystems

- [The Great Cumbung Swamp](#) - One of the largest and most ecologically significant reed swamps in NSW. It serves as a habitat for over 130 bird species and acts as a terminal wetland, trapping water, sediment and nutrients.
- [Lake Brewster](#) - A major wetland in the Lachlan Valley and a breeding site for pelicans.

Economy

- People and Agriculture - More than 80% of the land in the catchment is used for agriculture. The slopes and eastern plains support [dryland cereal production](#) and livestock grazing, while the tablelands and western plains support dryland grazing.

Other

- People in the Lachlan Valley rely on releases from Wyangala Dam for irrigation, town water supply and environmental flows.

[Sustainable Rivers Audit](#) [Lachlan Water Plan](#) [Lake Cargelligo Bird List](#)

Lachlan River's

Distributaries

flow away (takes) from Lachlan River

- Willandra Creek
- Middle Creek
- Merrimajeel Creek

Tributaries

flow towards (adds to) Lachlan River

- Abercrombie
- Belubula
- Boorowa rivers
- Mandagery Creek
- Crookwell River
- Goobang Creek

Wyangala Dam Completed 1935

Closest Town: Wyangala
River: Lachlan
Dam Size: 85 m x 1370 m
Capacity: 1,217 GL
Reservoir: 54 km²

Carcoar Dam Completed 1970

Closest Town: Carcoar
River: Belubula
Dam Size: 52 m x 187 m
Capacity: 36 GL
Reservoir: 4 km²

Recreation in Lachlan

DID YOU KNOW?

Many lakes in the Lachlan catchment offer residents and tourists opportunities for recreational activities such as fishing, boating, swimming and water skiing.

Water Users

Local water users can join WaterNSW's [Customer Advisory Groups \(CAGs\)](#) and meet regularly to raise issues, provide advice, and share information.

The federal and state governments hold water licenses and plan how they use water for the environment.

Irrigators Livestock Industry Mining Households Towns Recreation Cultural Environment

Managing Water

Water is a precious resource that is protected by laws and carefully managed by three main agencies in NSW.

Dept of Climate Change, Energy, the Environment & Water (DCCEW)	Makes the rules Plan and develop laws, policies, and guidelines for everyone to follow
WaterNSW	Implements the rules <ul style="list-style-type: none"> Manage NSW's river systems & 41 dams Organise most users' licensing & approvals Monitor water for other agencies
Natural Resources Access Regulator (NRAR)	Enforces the rules Oversee and investigate to make sure everyone is following the rules

Native Species

The Lachlan River Valley is home to many native species, including threatened plants and animals. [DPIE](#) manages threatened fish.

Silver Perch	Murray Cod
Pelican	Straw-Necked Ibis
Eel-Tailed Catfish	Southern Bell Frog

Local River Projects

- [Lachlan River Recovery Project](#): A project aimed at improving the resilience of residents and landowners to future flooding events
- [Plan to protect the Great Cumbung Swamp](#) - Focuses on restoring natural flooding regimes to protect reed beds, river red gums, and threatened species
- [Lachlan River Riparian Project](#): Overview of the Lachlan River Riparian Project aimed at enhancing the health and resilience of the river