

Weirs

FACTSHEET (Primary Learners)



What is a weir?

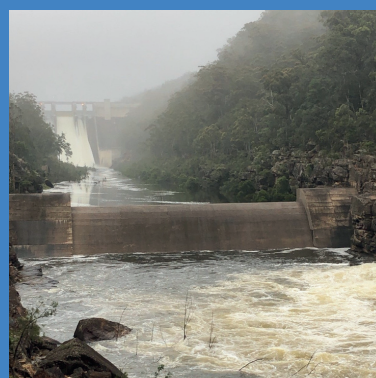
A weir is a small wall that is built across a river to block the flow of water. Weirs, unlike dams, often let water flow over the top and at times under them.

What are weirs made of?

Weirs are made of concrete and steel. Old weirs were made from rock and soil-fill.



Gogeldrie Weir is a steel weir.



Warragamba Weir is a concrete weir.



Liverpool Weir is a sandstone and natural rock weir.

**SAFETY
FIRST**

Safety around weirs

Weirs are often used for fun activities like fishing, swimming, and kayaking.

The downstream side of weirs can be very dangerous.

The water coming out of weirs can hold people under the water.

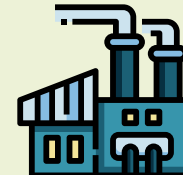
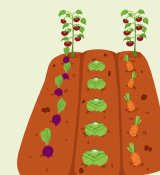
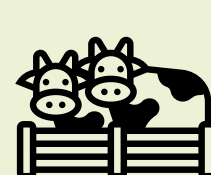
To be safe, keep away from the downstream side of weirs.

Photo: Penrith Weir



Why do we have weirs?

Weirs help to control the flow of water and raise the water level on their upstream side. WaterNSW cares for more than 351 weirs across New South Wales!



Weirs hold water to be used by:

- towns,
- homes,
- irrigators (farmers), and/or
- industry.

Balranald Weir supplies water to the nearby town and farmers. It has a fish ladder!

Did you know?



The Baiame's Ngunnhu are ancient stone fish traps. This weir's stone walls guided fish into holding ponds where the Ngaemba People caught them.



Which weir is closest to you? What is its job?



Pheasants Nest Weir is an important part of Sydney's water supply system.



The Maude Weir helps send water onto the floodplain.