

Lake Burragorang and Warragamba Dam

Learn with Shellby

Can you believe it took 12 years and over 1 800 people to build Warragamba Dam?

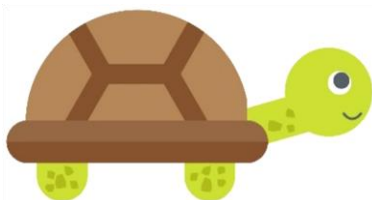
The lake behind Warragamba Dam is called Lake Burragorang.

When the lake is full, it can hold 4 times the amount of water in Sydney Harbour.

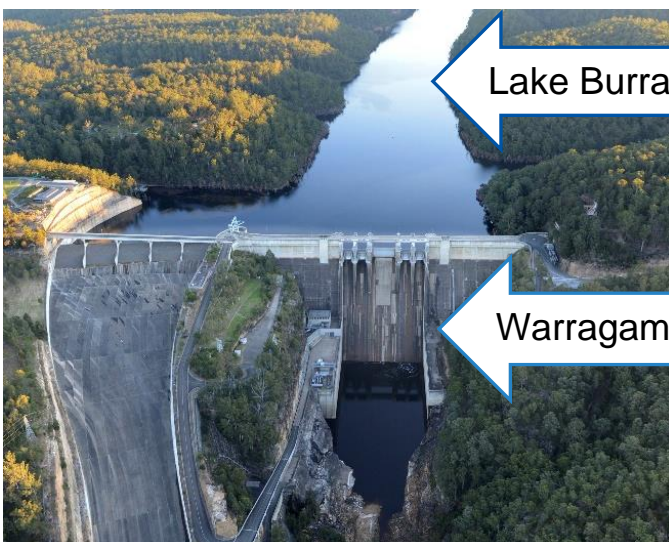
Lake Burragorang holds almost all of Greater Sydney's drinking water, 80% in fact!

Question: Where does the water come from to fill up Lake Burragorang?

Answer: Rain falls onto the hills and mountains of the Warragamba catchment. It then runs off into streams, creeks, and smaller rivers. These waterways flow into the main rivers called the Coxs and Wollondilly. These larger rivers fill Lake Burragorang.



Remember: a catchment is an area where water is collected by the landscape.



Lake Burragorang

Lake Burragorang

Warragamba Dam

Warragamba Dam



Bring a part of Greater Sydney's drinking water catchment to life!

Follow the instructions below to complete the next page.

Water cycle

- Draw a sun in the top corner.
- Draw **4** clouds in the sky.
- Draw some rain falling onto the catchment from **2** of the clouds.

Human and animal land use

- Draw a farm house in the bottom corner.
- Draw **2** cows and **3** sheep near the farm house.
- Draw paddocks (fences) around the animals.

Fences have an important job to do!

- Draw a water trough in the paddocks for the animals to drink from.



Natural environment



- Draw some trees on the hills.
- Make sure some the trees are close to the edge of the lake.

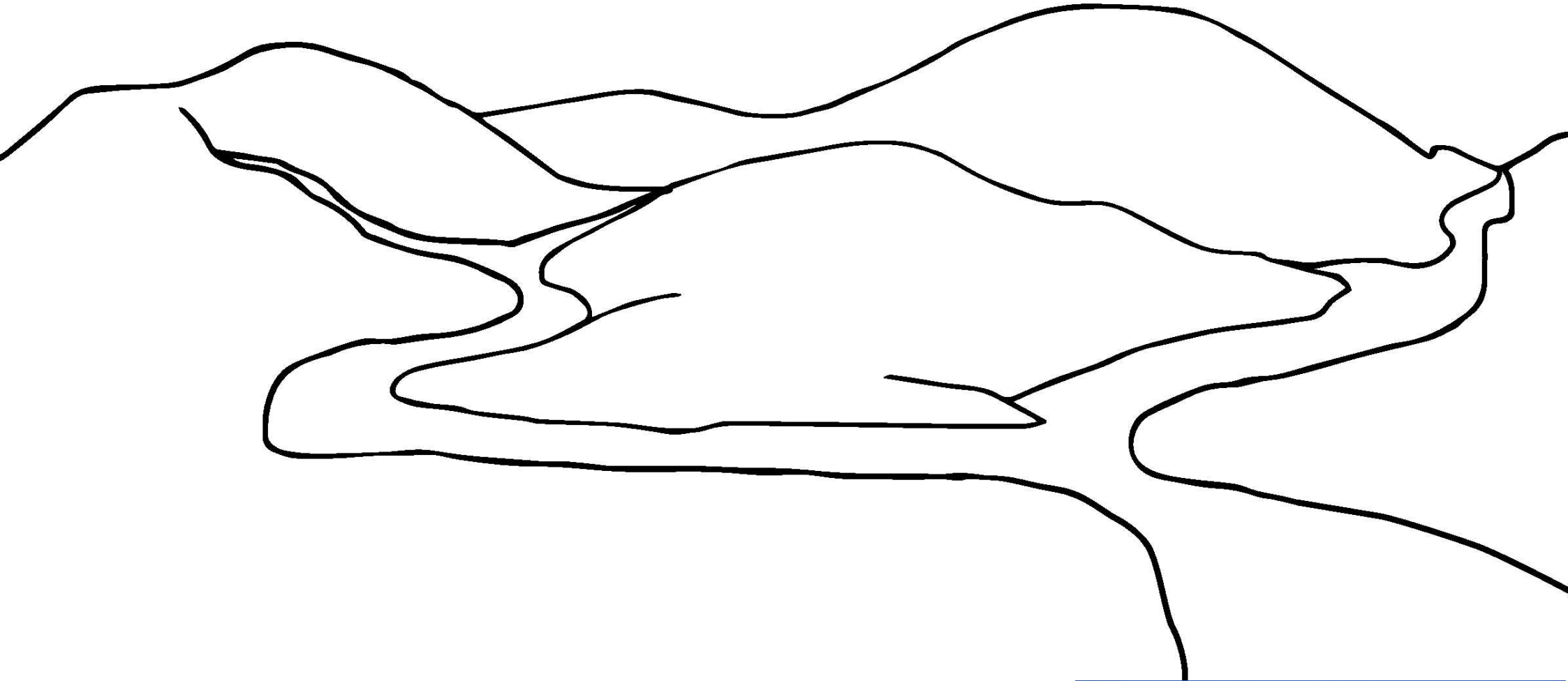
Tree roots have an important job to do!

- Colour the mountains green
- Colour the rivers blue.

Well done!

You've finished bringing a part of Greater Sydney's drinking water catchment to life!





Name