



Regional drought update

1 October 2019



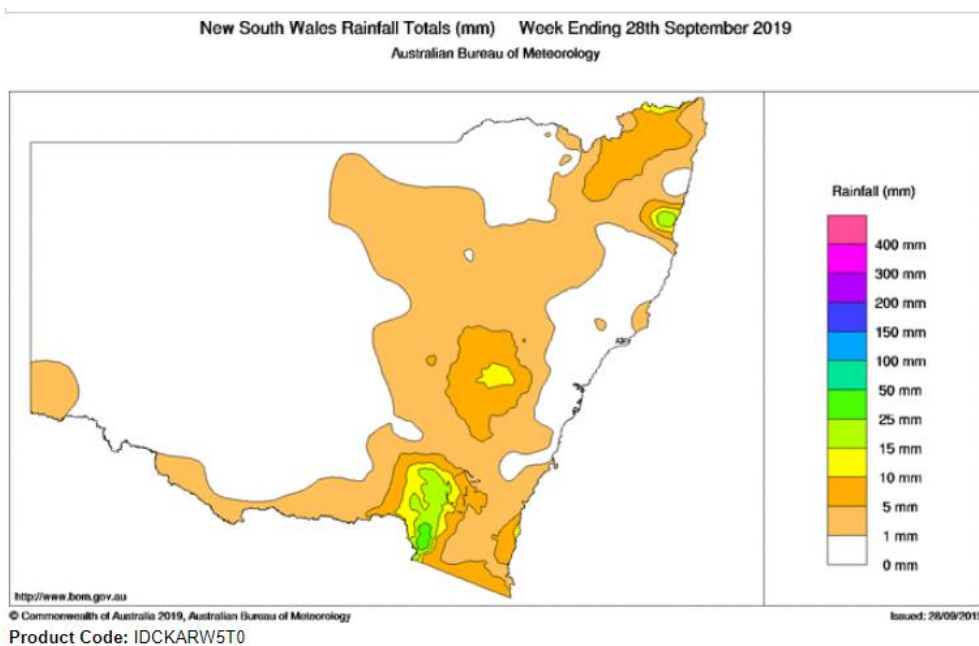
Key customer messages

- WaterNSW is working alongside NSW Government water authorities in responding to one of the worst droughts ever experienced in New South Wales.
- Across the drought-hit northern river valleys and the Far West, water for critical human needs will be top priority as dam storages reach critical lows and more rivers and creeks run dry.
- Rainfall is likely to be below average across most of the country for the remainder of 2019 (October to December), according to the BOM.
- Keepit dam on the Namoi River and the Menindee lakes at the lower end of the Barwon-Darling system are functionally dry.
- Drought conditions are deeply impacting town water supplies including major centres like Tamworth and Dubbo, but also many smaller centres are impacted including Cobar, Nyngan, and Manilla.
- The Southern valleys have improved with recent rainfall, improving catchment wetness, but rainfall for the year is still well below long term average and allocations and storage levels are low for this time of year.
- Significant rainfall is required to break the drought in northern NSW and initial losses of 100-150mm can be expected before significant runoff will occur in most catchments. Large shortfalls in reserves in all northern systems need to be captured in storage for high security deliverability before general security can receive any allocations. The BoM's outlook indicates for August to October remains drier than average.

Weather

Last week's weather:

The eastern parts of the state recorded negligible rainfall during the week. The main falls occurred in the snowy mountain's region of up to 25mm. The western regions again remained dry.

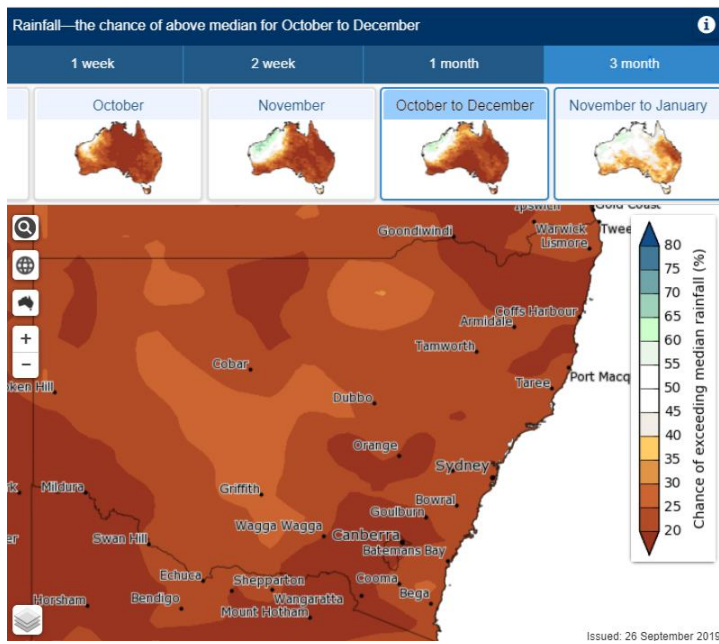


This week's forecast:

In the first part of the week, the central to northern parts of the coastal regions of the state are expected to receive rainfall of up to 5mm. The rest of the state is forecast to remain dry. As the week progresses there is no rainfall forecast for the entire week.

Longer-term outlook:

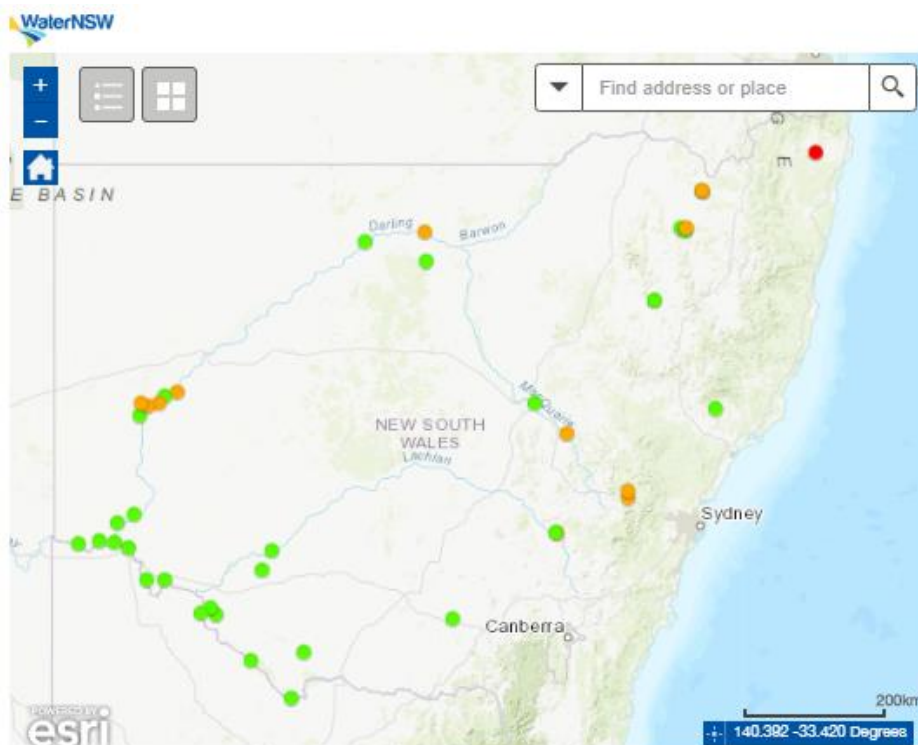
- High chances of a drier October and November.
- Rainfall is likely to be below average across most of the country during October to January.
- For the month of October, most of the country is likely to be drier than average. Large parts of the eastern two-thirds of the country are very likely to be drier than average (greater than 80% chance). This pattern continues into November, with most areas of Australia likely to be drier.



Water Quality

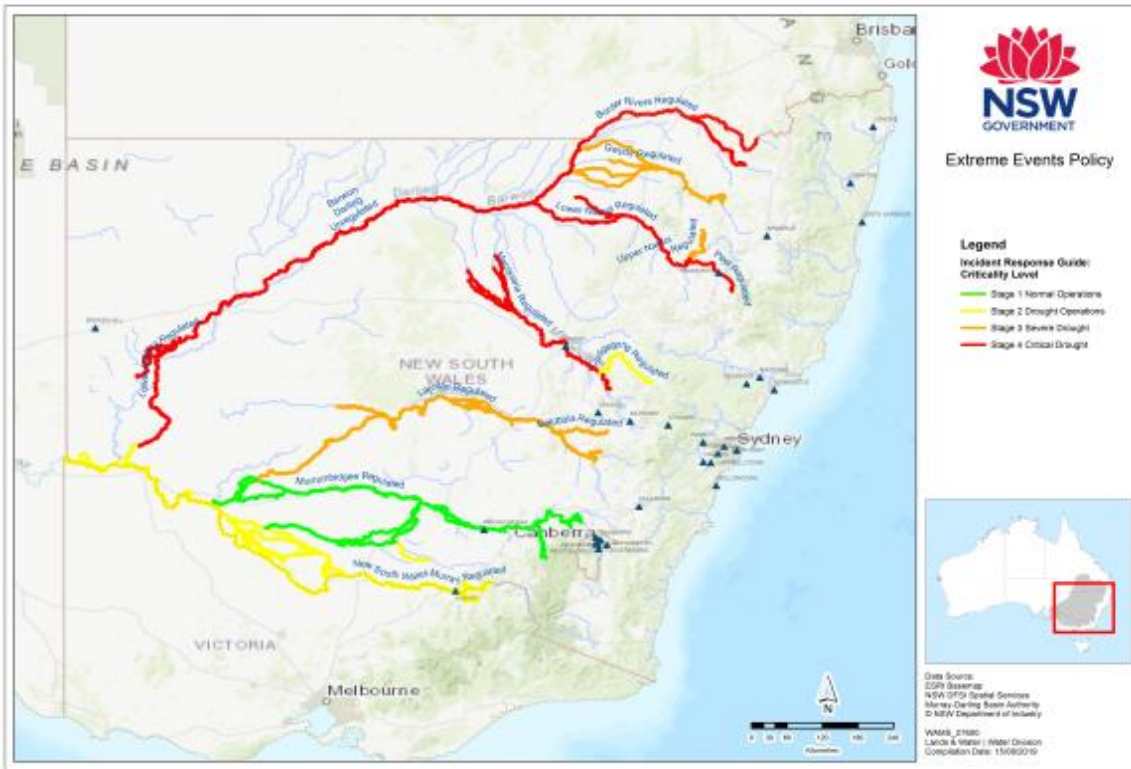
Red algal alerts continue at only one site around NSW regional monitoring sites within the state. This alert is being seen at:

- Richmond River at Casino.
- Please visit [here](#) for more detailed information.



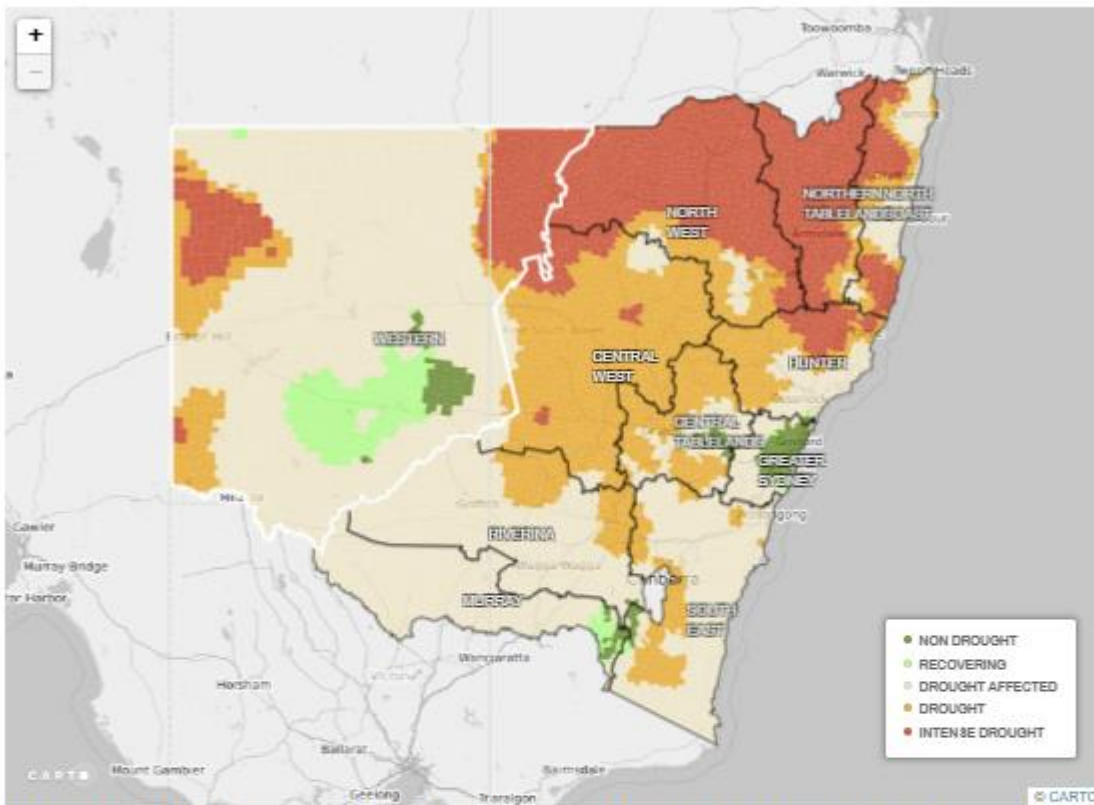
Incident Response Guide Criticality Level

There has been no change in criticality levels throughout the state in the last week.



Please visit <https://www.industry.nsw.gov.au/water/allocations-availability/allocations/summary> for more detailed information.

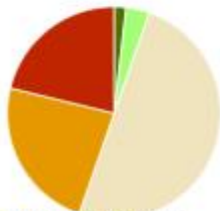
Drought heat map



CDI = Combined Drought Indicator. RI = Rainfall Index. SWI = Soil Water Index. PGI = Pasture Growth Index. DDI = Drought Direction Index

Data current to 27/9/2019 (AEST)

NSW Summary



For more information please refer to the NSW DPI [State Seasonal Update](#).

- Non Drought: 1.8 %
- Recovering: 3.6 %
- Drought Affected: 49.4 %
- Drought: 23.4 %
- Intense Drought: 21.2 %

Please visit <https://edis.dpi.nsw.gov.au> for more information

Rural Dam Levels: 27 September 2019

| River Valley | Capacity | Current Status | | Weekly change (GL) | Comments | Likelihood of fill and spill | Allocations for 2019/20 | | |
|--------------------------------|------------|----------------------|-------------|--------------------|---|------------------------------|-------------------------|---------------|-------------------------|
| Storage Dam, Nearest Town | (GL) | % of active capacity | Active (GL) | | Supply Issues | | High Security | Gen. Security | Est Carry-over @ 1/7/19 |
| Border Rivers | | | | | | | | | |
| Glenlyon Dam, Stanthorpe (Qld) | 254 | 7% | 17 | -4 | Releases for Boggabilla transfer. | <20% | 100% | 0% | <1% |
| Pindari Dam, Inverell | 312 | 5% | 15 | -0 | C'over restricted to 50% Deliverability | <20% | 100% | 0% | <1% |
| Gwydir Valley | | | | | | | | | |
| Copeton Dam, Inverell | 134 | 8% | 112 | -2.3 | Deliverability restricted | <5% | 100% | 0% | 3% |
| Namoi Valley | | | | | | | | | |
| Keepit Dam, Gunnedah | 419 | 1% | 4 | -0 | C'over restricted to 0% | <20% | 75% | 0% | 5% |
| Split Rock Dam, Manilla | 394 | 2% | 7 | -0 | C'over restricted to | <5% | 75% | 0% | 22% |
| Chaffey Dam, Tamworth | 98 | 20% | 20 | -0 | Deliverability restricted | <50% | 50% | 0% | N/A |
| Macquarie Valley | | | | | | | | | |
| Burrendong Dam, Wellington | 115 | 4% | 51 | 0 | C'over restricted to 0% Deliverability restricted | <20% | 70% | 0% | 0% |
| Windamere Dam, Mudgee | 367 | 31% | 114 | -1 | Regulated releases. | <5% | 70% | 0% | 54% |
| Lachlan Valley | | | | | | | | | |
| Wyangala Dam, Cowra | 121 | 21% | 258 | -15 | C'over restricted to | <20% | 87% | 0% | 15% |
| Carcoar Dam, Carcoar | 36 | 21% | 7 | 0 | Deliverability restricted | 10% | 100% | 0% | 38% |
| Murrumbidgee Valley | | | | | | | | | |
| Burrinjuck Dam, Yass | 102 | 33% | 341 | 2 | Min Planned eWater | 40% | 95% | 6% | 8% |
| Blowering Dam, Tumut | 160 | 58% | 926 | 9 | Min Planned eWater | <10% | 95% | 6% | 8% |
| Murray | | | | | | | | | |
| Dartmouth, Mitta Mitta (Vic) | 383 | 57% | 2175 | -11 | Transfers to Hume | N/A | N/A | N/A | N/A |
| Hume Dam, Albury | 298 | 42% | 1240 | -9 | Env orders and L Vic | <25% | 97% | 0% | 18% |
| Lower Darling | | | | | | | | | |
| Menindee Lakes, Broken Hill | 163 | 1% | 13 | -0 | Restrictions in place | N/A | 30% | 0% | 19% |
| Hunter Valley | | | | | | | | | |
| Glenbawn Dam, Scone | 750 | 49% | 364 | -1 | Regulated releases | 20% | 100% | 95% | 23% |
| Glennies Ck Dam, Singleton | 282 | 49% | 139 | -1 | Regulated releases | 20% | 100% | 95% | 23% |
| Lostock Dam, Gresford | 20 | 80% | 16 | 0 | Regulated releases | 100% | 100% | 100% | N/A |
| Coastal Area | | | | | | | | | |
| Toonumbar Dam, Kyogle | 11 | 52% | 6 | -0 | Regulated releases | 100% | 100% | 100% | N/A |
| Brogo Dam, Bega | 9 | 75% | 7 | -0 | Regulated releases | 100% | 100% | 40% | N/A |
| Total | 177 | 32.9% | 5830 | -34 | | | | | |

WaterNSW has water resources in Dartmouth, Hume and Glenlyon Dams. TWS = Town Water Supplies. 1 Gigalitre (GL) = 1,000 Megalitres (ML) 1 ML = 1,000,000 litres

DETAILS – VALLEY OVERVIEW

| 30 September 2019 | | Storage Volume (GL) | Weekly inflows (GL) | Releases ML/d | Comment | GS % AWD | AWD Inflows Required (GL) |
|-------------------|-------------------------|---------------------|---------------------|---------------|---|----------|---------------------------|
| Valley | Dams | | | | | | |
| Border | Pindari Glenlyon | 14.9 15.6 | 0 0.6 | 13 0 | Glenlyon Dam releases are to shift water to Boggabilla for Goondiwindi and Boggabilla TWS. Minimum releases from Pindari. | 0 | 30.4 |
| Gwydir | Copeton | 112 | -39 | 19 | Current releases from Copeton Dam are minimum required releases to meet WSP. | 0 | 41 |
| Namoi | Split Rock Keepit | 6.9 4.0 | 0 0 | 32 0 | Current releases are for Upper Namoi needs. No further releases from Keepit into the Lower Namoi until inflows occur. | 0 | 95 |
| Peel | Chaffey | 20.1 | -56 | 41 | Chaffey Dam releases for Tamworth. Level 4 water restriction for Tamworth. | 0 | N/A*** |
| Macquarie | Burrendong Windamere | 51 116 | 0.9 0 | 97 70 | Current releases from Burrendong Dam are for town and D&S demand. Current release from Windamere Dam are for Cudgegong demand. | 0 | 385 |

| 30 September 2019 | | Storage Volume (GL) | Weekly inflows (GL) | Releases ML/d | Comment | GS % AWD | AWD Inflows Required (GL) |
|-------------------|-------------------------|---------------------|---------------------|---------------|--|----------|---------------------------|
| Valley | Dams | | | | | | |
| Lachlan | Wyangala Carcoar | 258 7.6 | 1.27 0 | 2340 2 | Current releases from Wyangala Dam are mainly for TWS, Irrigation environment, and S&D replenishment. Current releases from Carcoar Dam are low. Due to drought conditions, the end of system daily environmental flow requirement have been temporarily suspended. | 0 | 318 |
| Murrumbidgee | Burrinjuck Blowering | 341 925 | 5.9 21* | 450 2230 | Minimum releases meeting demand for: irrigation, planned environmental water (1,087ML/d at Balranald and 50ML/day at Darlot) and held environmental water to Lowbidgee. | 6 | |
| Murray | Hume | 1240 | 70** | 4670 | Transfers from Hume for eWater and S.A. at higher rates as flows from Kiewa and Ovens Rivers reducing. | 0 | 130 |
| Barwon-Darling | | N/A | | N/A | CEWO water releases from Glenlyon reached Mogil Mogil and Copeton releases reached Warraweena. Warrego flow reached Wilcannia. Cease to flow conditions have recommenced from Mungindi to Wilcannia. | N/A | N/A |

| 30 September 2019 | | Storage Volume (GL) | Weekly inflows (GL) | Releases ML/d | Comment | GS % AWD | AWD Inflows Required (GL) |
|-------------------|----------|---------------------|---------------------|---------------|---|----------|---------------------------|
| Valley | Dams | | | | | | |
| Lower-Darling | Menindee | 12.7 | 0 | Negligible | Four block banks have been constructed and filled, pipes closed. Releases from Lake Wetherell ceased on 12 Feb 2019. Supply to Broken Hill is being met from W2BH pipeline. | 0 | N/A |

* Includes inflows from Snowy Hydro, already budgeted.

** Includes inflows from Dartmouth and Snowy Hydro, already budgeted.

*** The Department of Industry / Water monitors the resources regularly and the water allocation statement for the Peel regulated river is revised accordingly, depending on resource availability.

More information

Stay up-to-date with storage levels, system risks and climate conditions across NSW. You can also find valley-specific information about storage status, predicted release patterns and operating conditions. Subscribe to have the report emailed to you each week. Please visit our website at waternsw.com.au/subscribe for more information.

For more information, visit our website at waternsw.com.au/drought or call us on **1300 662 077**.